



INDIA'S First and Foremost Liner  
Made with PURE PHENOLIC RESIN



DECORATIVE LAMINATES

*A Commitment To Excellence*

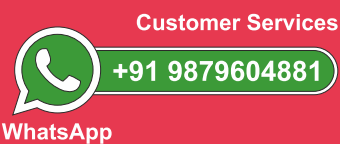
[www.durianlam.com](http://www.durianlam.com)



DECORATIVE LAMINATES

*A Commitment To Excellence*

[www.durianlam.com](http://www.durianlam.com)



WhatsApp

**CEDAR DECOR PVT. LTD**

A-1 / 1001, 10th Floor, Palladium Corporate Road,  
Makarba, Ahmedabad-380015. Gujarat, India

+91 (79) 2970 5335 / 6 / 7 | Email:-mail@cedarindia.com | [www.durianlam.com](http://www.durianlam.com)

Ask For



An ISO 9001 : 2015, ISO 14001 : 2015



LONGER LIFE

IMPROVED  
STRENGTH

HIGH SCRATCH  
RESISTENCE

Ask For



An ISO 9001 : 2015, ISO 14001 : 2015

# A JOURNEY

Home & Office Furniture

Laminates

Veneer

Plywood & Doors

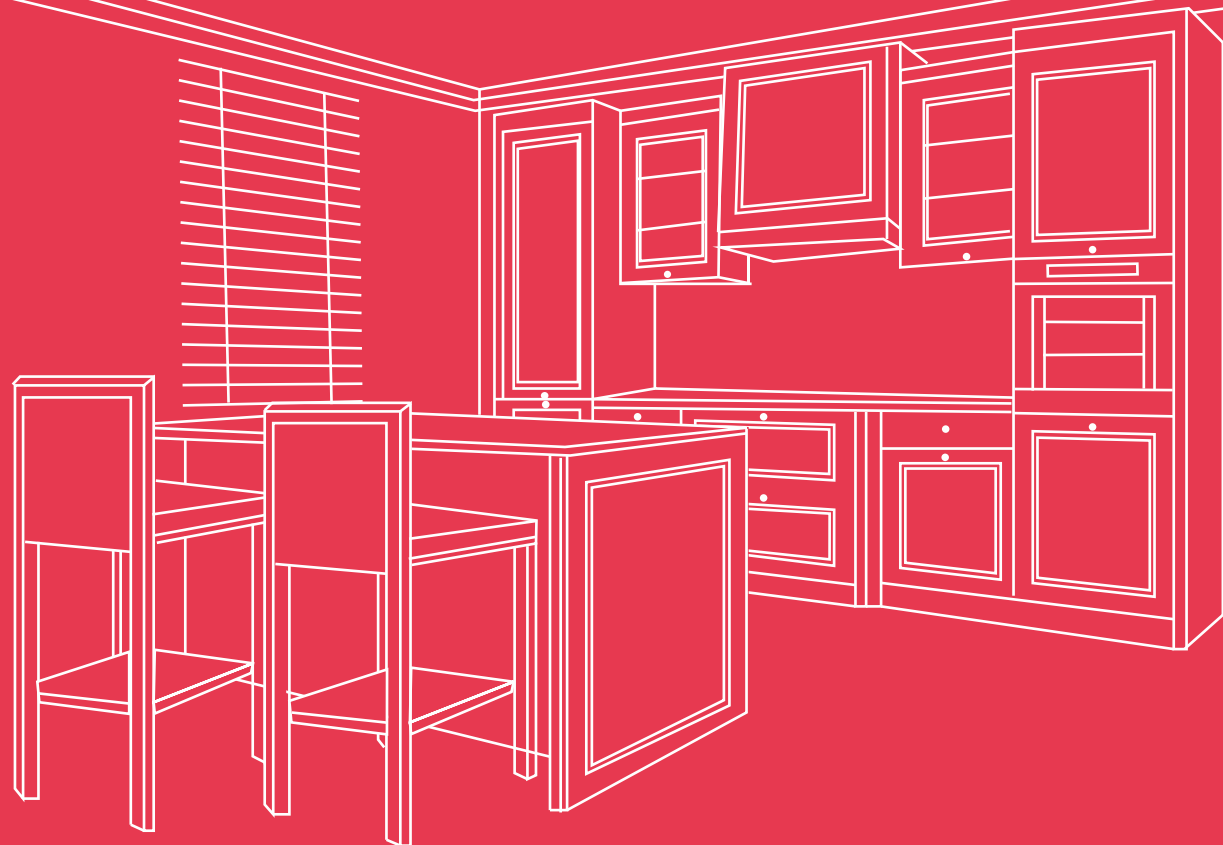
Turnkey Solution

THAT HAS BEEN INCREDIBLE

**3.3** Million Customers

**11,000+** Corporate Clients

INDIA'S First and Foremost Liner Made with PURE PHENOLIC RESIN



DECORATIVE LAMINATES



**Rohit Agarwal**

Kanpur, India

**Your imagination, our creation**

A brand worth trying with exceptional range of quality products. An experience you will not regret later.

"Designs made for inspiring interiors. Best for commercial and residential clients."



**Karan Kumar**

Mumbai, India

**Thank You Durian Laminates for Making my work space Beautiful.**

I Recommend Durian Laminates As it Got lot's of variety and Range of Products. My Personal Experience was very good because of the Availability of Products and On time Delivery .

**Natasha**

Mumbai, India

**Inspired by art, we gave you decorative veneer**

"First one to set up a decorative veneer manufacturing in india."



**Rohir Alok**

Delhi, India

**We began our journey..**

Started our journey by making international grade plywood

"Durian was the perfect fit for my mom. Now it's perfect fit for me"

**Adi Shah**

Mumbai, India

**Exploring new platforms to stay connected, with you**

"Every time I think of buying new furniture, all I have to do is log in to the durian website and it's done."

**Neeraj Singh**

Chandigarh, India

**Transforming your Home and Office, One space at a time**

"There's not a single space in my life that Durian has left untouched."



**Sanna Sheikh**

Kolkata, India

**Opened doors to newer Avenues**

"My friends and relatives can't stop talking about my interiors. Thanks to Durian."

**Suraj Chhabria**

Mumbai, India

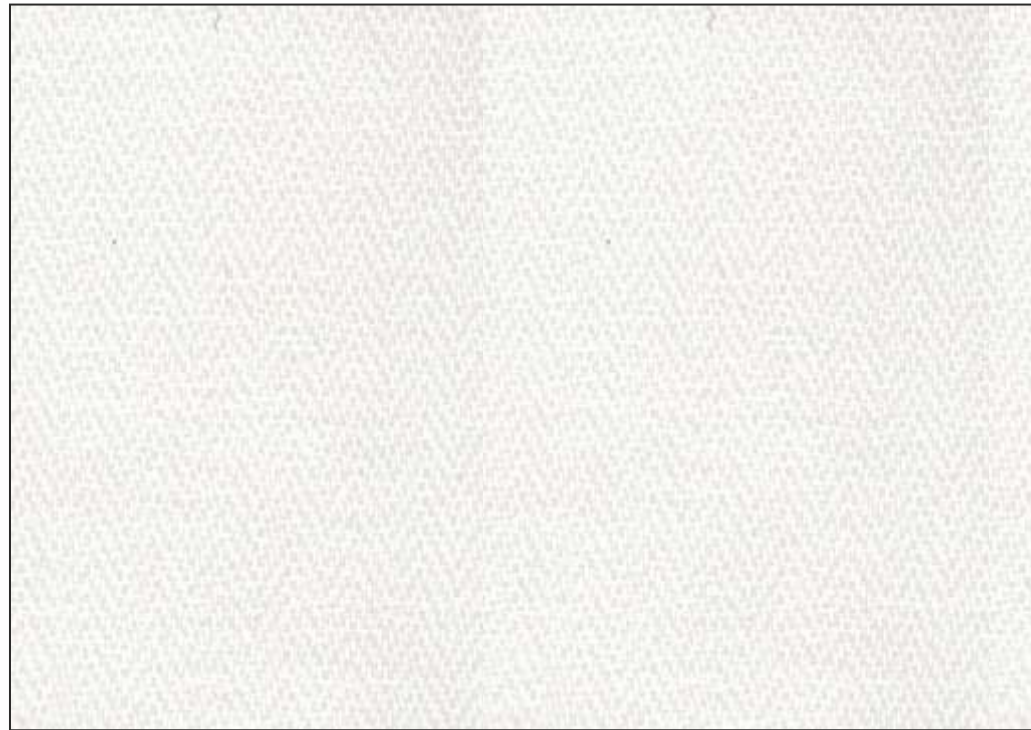
**Beautiful Laminates That Stand the test of time**

"I believe in long term relationships. I believe in Durian."



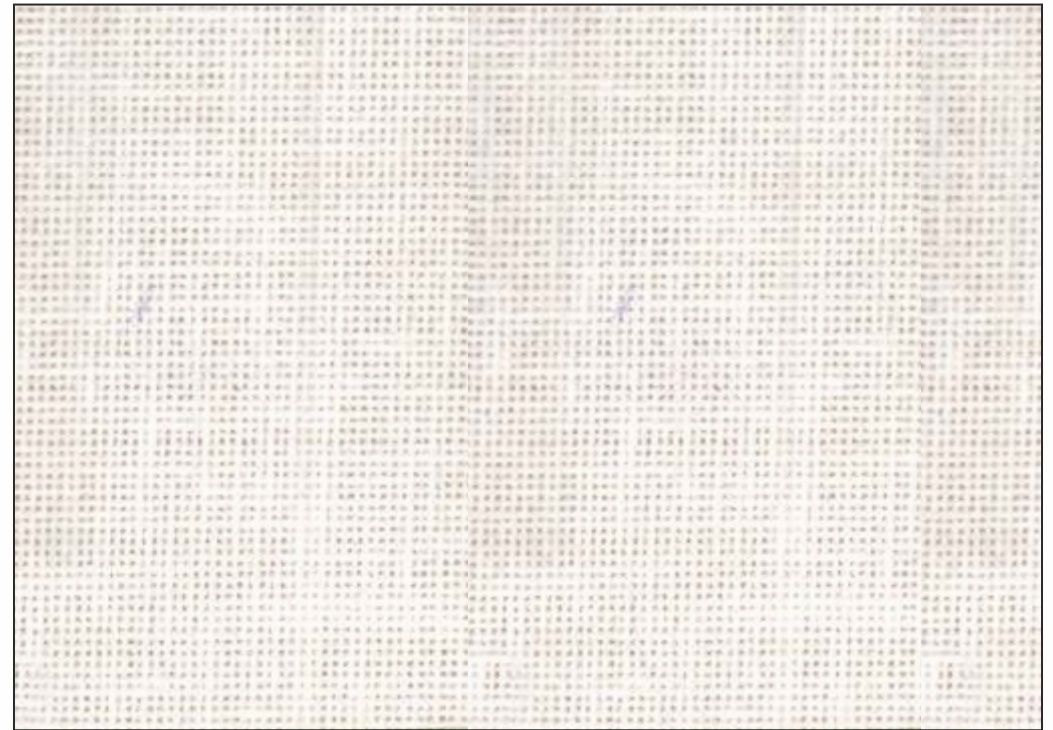
[www.durianlam.com](http://www.durianlam.com)





NEW

73998 SNOW WOOLEN



NEW

73980 GREY DOT FABRIC



73995 LIGHT WOOLEN



73994 LIGHT DOT FABRIC







73987 STITCH LINEN



73958 GREY FABRIC



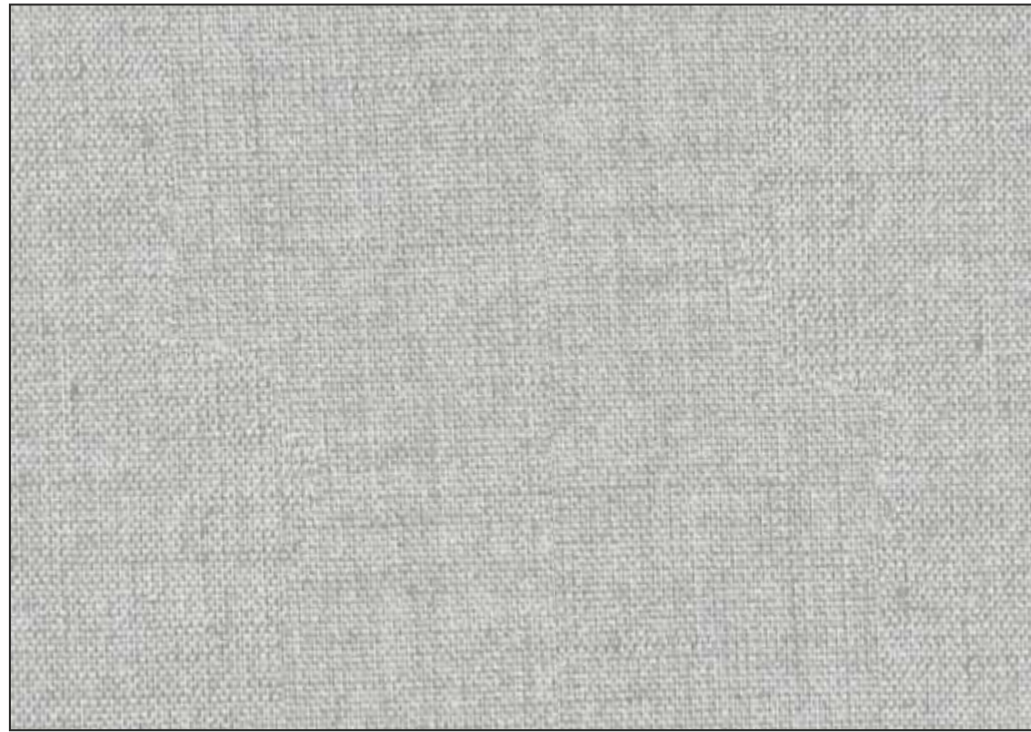
73983 CREAM LINEN



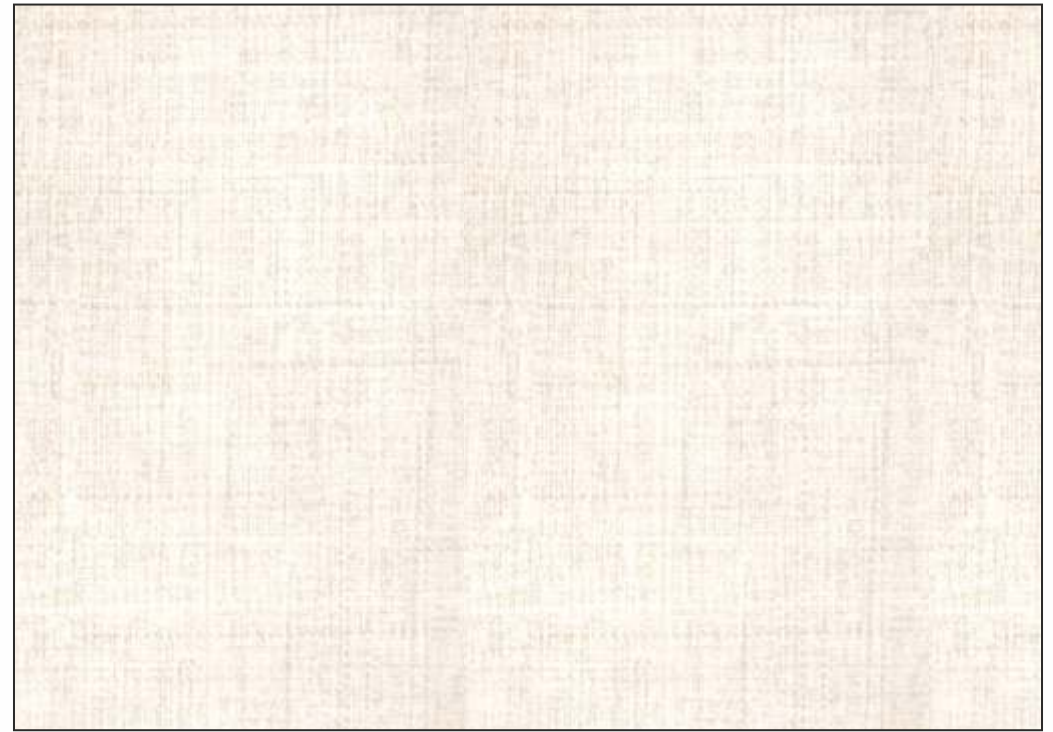
73984 BEIGE LINEN







73991 FEB FABRIC



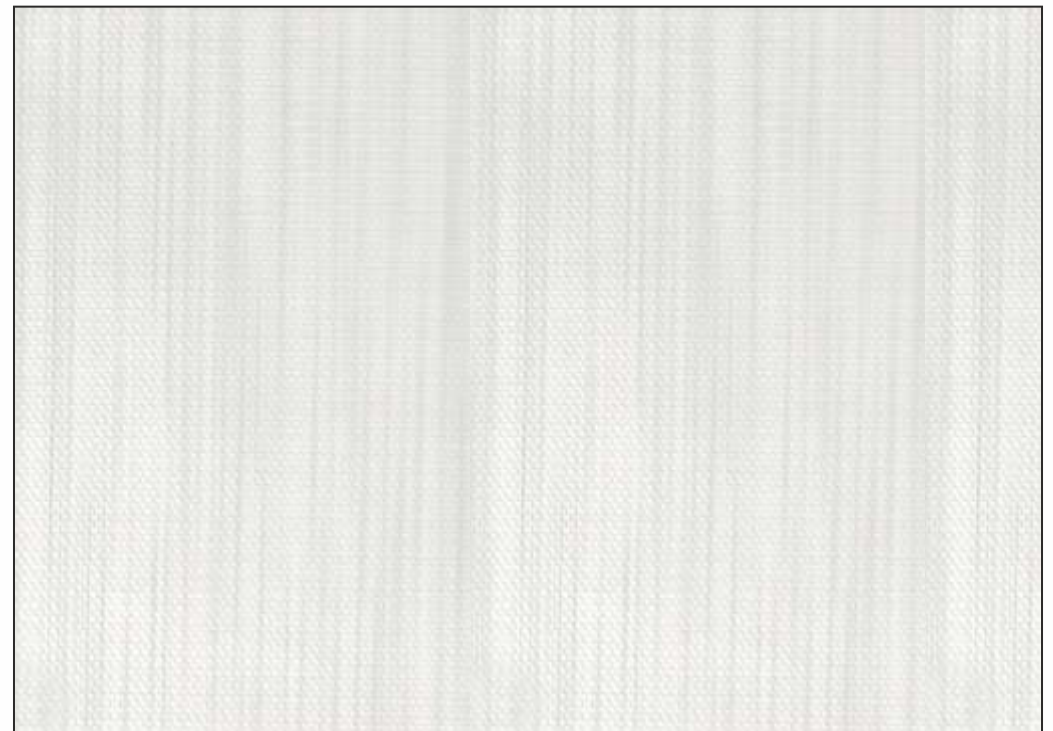
73999 GRACE FABRIC



NEW



73992 IVORY FABRIC

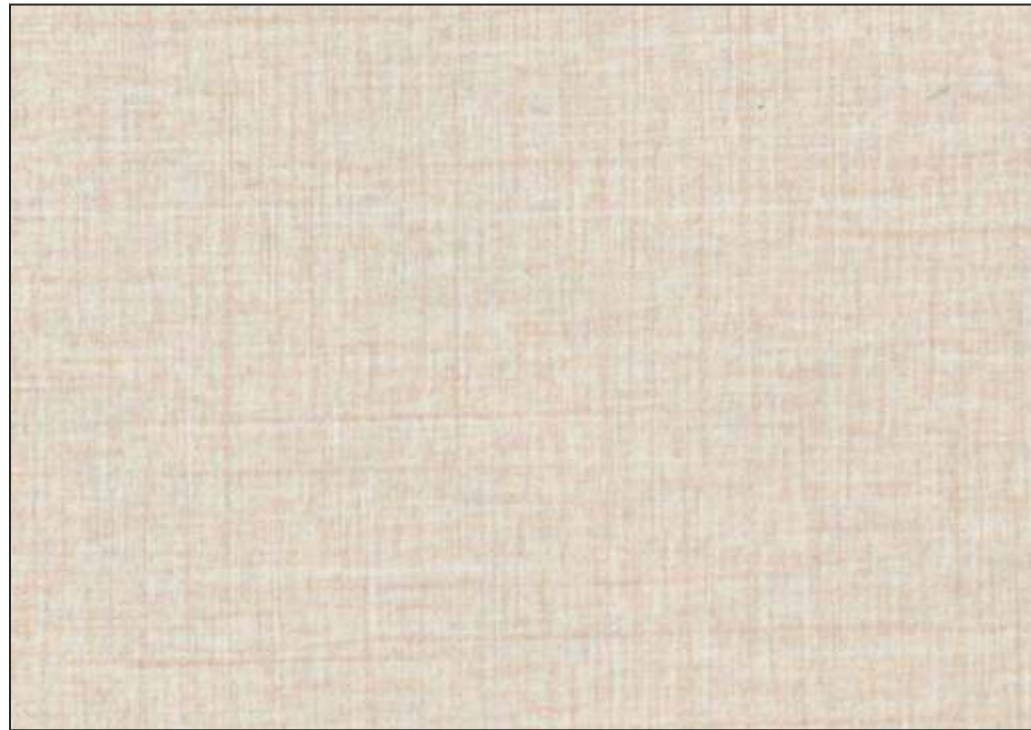


73979 DOVE LINEN

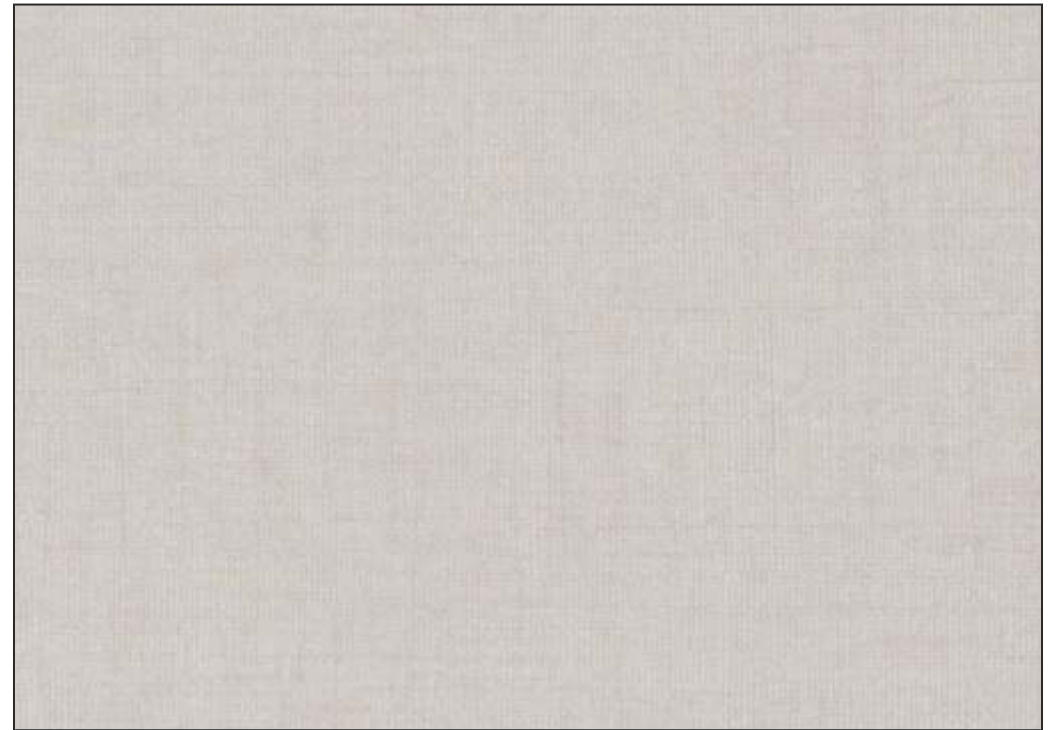


NEW





73981 ROYAL FABRIC



73985 CALICO FABRIC



73960 BEIGE FABRIC



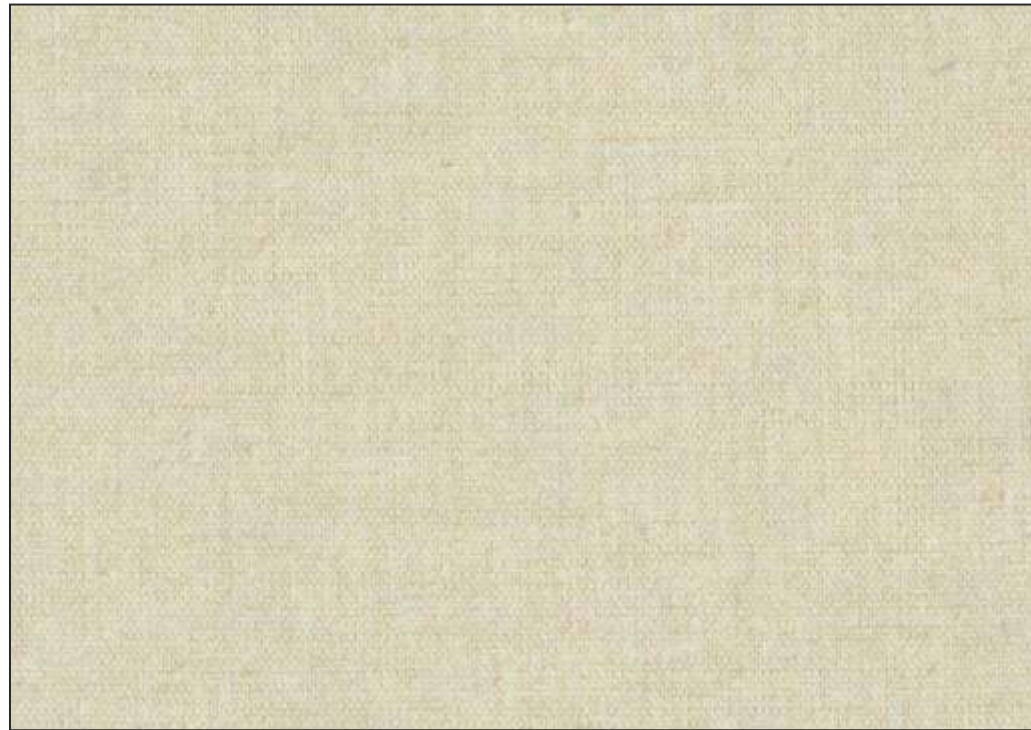
73988 FINIX FABRIC





 PREMIUM LINERS - FABRICS

 PREMIUM LINERS - WOODS



73975 BRIGHT FABRIC



79344 FINE OAK



79341 CAMELY TEAK



NEW

NEW



73974 WHEAT FABRIC



79343 IMPERIAL OAK



79342 DARK TEAK



NEW

NEW





# PREMIUM LINERS - WOODS



72020 KILIS WENGE



72990 WALNUT ZEN



79336 REAL WALNUT



73921 FRENCH WALNUT



72691 ROYAL WALNUT



79325 NATURAL OAK



72989 WALNUT FIBER



79337 NATURAL WALNUT







# PREMIUM LINERS - WOODS



73202 TYROL PINE



73990 ANTIQUE PINE



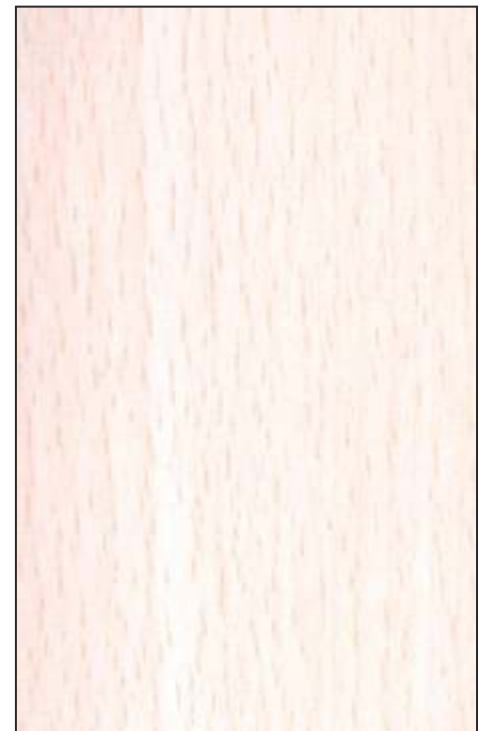
73208 HIGHLAND PINE



73242 BEECH BAVARIA



72930 MANGFALL BEECH



72960 WHITE BEECH







# PREMIUM COLLECTION

# TECHNICAL SPECIFICATION



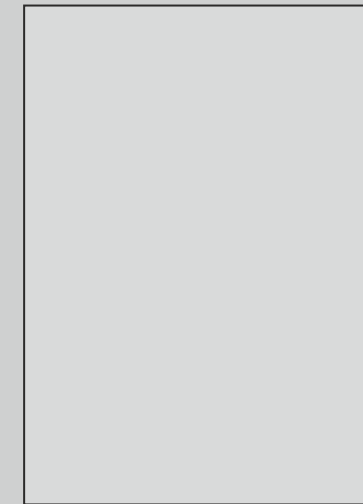
DECORATIVE LAMINATES

A Commitment To Excellence

★ 80 GSM PAPER



71180 EGG WHITE



71463 SILVER GREY



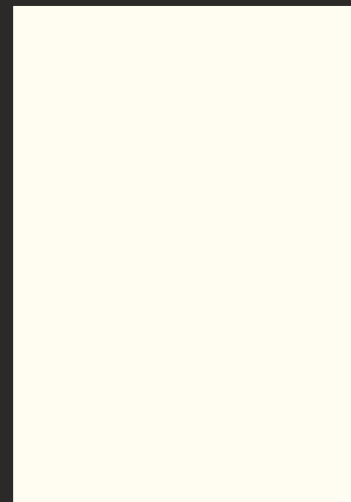
71171 DOVE GREY



NEW



71111 SF FROSTY WHITE



71111 MT FROSTY WHITE



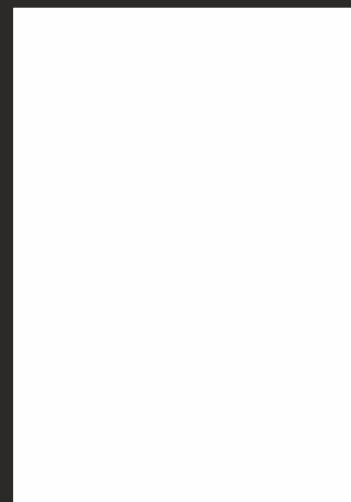
71172 DARK GREY



NEW



71117 SF WHITE



71117 MT WHITE



PROPERTIES	UNIT	SPECIFIED VALUE				DURIAN RESULT	
		IS:2046/95	BSEN438	DINEN438	ISO4586-1	VGS	HGS
Surface Wear Resistance	REV.	350	350	350	350	350 Min	500 Min
Boiling Water Resistance							
• Thickness Increase	%	12.0 Max	14.0 Max	14.0 Max	14.0 Max	8	7
• Weight Increase	%	14.0 Max	12.0 Max	12.0 Max	12.0 Max	7	6
• Appearance		Grade	4	4	4	4	5
Dimension Stability							
• MD (Machine Direction )	L-%	0.53 Max	0.625 Max	0.625 Max	0.625 Max	0.45	0.35
• CD (Cross Direction) T-%	T-%	1.01 Max	1.100 Max	1.100 Max	1.100 Max	0.65	0.55
Resistance to High Temperature & Cigarette Burns		Grade	3	3	3	3	4
Resistance to Steam	Grade	4	4	4	4	5	5
Resistance to Dry Head							
• Gloss	Grade	3	3	3	3	4	4
• Other		4	4	4	4	5	5
Resistance to Cracking	Grade	4	4	4	4	5	5
Resistance To Scratching	Newton	2.0	2.0	2.0	2.0	2.5	3.5
Small Diameter. Ball Resistance	Newton	20	20	20	20	25	28
Specific Gravity	gm/cm3	-	-	-	-	1.38 to 1.45	1.38 to 1.45
Resistance to Staining	Grade						
• Acetone		5	5	5	5	5	5
• Coffee		5	5	5	5	5	5
• Sodium Hydroxide 25% Solution		5	5	5	5	5	5
• Hydrogen Peroxide - 30%		4	4	4	4	5	5
• Shoe Polish		4	4	4	4	5	5
• Citric Acid-10 % solution		4	4	4	4	5	5
Resistance to Color Change in							
• Xenon Arc Light in Enclosed	Blue Wool	6 Min.	6 Min.	6 Min.	6 Min.	6 Min.	6 Min.
• Carbon Arc Light	Standard	5 Min.	5 Min.	5 Min.	N / A	5 Min.	5 Min.

Grade : 5-Highest, 1-Lowest, VGS - Vertical Grade Standard, HGS : Horizontal Grade Standard

### PRODUCT WARRANTY

\*T&C :

25 Year Warranty Clauses: Cedar Decor Pvt Ltd. Warrants that its Products are free from Manufacturing defects & that they are fit and suitable for liner application Only. Product Warranty is only applicable for application of liner sheets on the inner side of the furniture. The warranty will not be considered for application of liner sheets on the outer side of furniture. Corner cracking & Air Bubble issues are not related to manufacturing but directly related to the application. Such types of complaints are not covered under the warranty. The Period of 25 years will be calculated from the date of sale of the laminates to the end consumer. Purchase invoice of the sheets is required for warranty. Without proof of purchase, no quality or warranty claims will be entertained. Our Liability will be limited to the extent of the cost of the Product Only.

### PRODUCT TECHNICAL DATA & SPECIFICATIONS

Type	: Convectional Cold Press Grade Laminate for Internal Furniture Application. (Other Grades Available on request)
Thickness	: 0.72mm, 0.8mm, 0.85mm, 0.92mm, 1mm ± 10% (As per ISI Standard)
Size	: 8x4'
Product Standard	: Comprising to • British European Standard : BS EN 438 • American NEMA LD 3, • BIS (Bureau of Indian Standard ) IS:2046 • BIS (Bureau of Indian Standard ) IS:2036 Grade P1 Phenolic/Electronic Insulation. • ISO 4586.

### PRODUCT CARE AND MAINTENANCE

For cleaning the surface of the laminates, use dry cloth to wipe the stains. If needed can use ordinary liquid detergent ( non-acidic) or ammoniated liquid. After taking a trial on small portion. Stain remover or Industrial organic solvents can be used to remove stubborn stains in case if there is no problem. One should not use, wire or hard-plastic brushes, and abrasives to clean the surface.

The LUSTROUS Fancies and Wood collection are specially made laminates to give bright optical view. The properties of these laminates are very sensitivity and thus should be used only for vertical applications. While cleaning these laminates use only dry cloth or wet damp cloth in natural water only.

Since, conventional laminates are made for interior decorations, should not be used for external use where there are chances for direct exposure to sunlight or any other sort of direct heat.

It is always recommended to keep the substrate horizontal while pasting the laminates. Immediate removal of pressure and vertical application should not be practiced.

Samples pasted in the folder represents the finish & design and not the actual thickness.

TRADE SAMPLE NOT FOR SALE

DC  
CDPL / DLNR / 0923

All items available in 0.72 / 0.8 / 0.85 / 0.92 / 1 mm in Matt (MT), Sueded (SF) & High Gloss (HG)